



**Industrial  
Manufacturing  
Lighting**







**The Millwright™**

a naturaLED brand

**THE  
WORKHORSE  
LED LIGHT  
FIXTURE FOR  
DIRTY,  
HIGH HEAT  
ENVIRONMENTS  
LIKE THIS ONE.**



**The MillWright™**  
a naturaled brand

### **Steel Mill Tough LED Lighting**

*The perfect solution for any industrial application.*

Naturaled® is home to high performance LED lighting. At naturaled® we design, engineer and build lighting technology from concept to market launch.

The manufacturing technology and product development team have collaborated to build a comprehensive line of industrial LED lighting solutions ideal for harsh environments.

The MillWright™ sets a new standard of excellence for industrial light fixtures. This industrial round high bay is engineered with an innovative design that combines the best features of high quality LED lighting into a high-performance fixture that endures hazardous settings that experience dust, water and sizeable vibrations. There is nothing else like it on the market.



Manufactured exclusively by  
**naturaled®**



# DESIGNED TO WORK AS HARD AS YOU DO.



Safety chains included

**Lightweight** at only 36 lbs.

**Remote Driver Kit** operates up to 30ft

Input line voltage:  
**277-480V**  
**120-277V**  
**250Vdc**

**Self-cleaning, designed housing** doesn't trap dirt and dust, keeping fixture clean and cool

**Thermal Design** withstands ambient temperatures from -40° to 70° C (158°F) at full lumen output

**Durable** made of ADC12 die-cast aluminum housing with corrosion-resistant powder coat finish



Dust tight, no ingress of dust



Protected against water projected from a nozzle



The superior performance of The MillWright™ industrial round high bay can be attributed to its numerous features and benefits. This DLC premium qualified fixture is IP66 rated to withstand dirt and dampness without failing or decreasing lumen output. It has an L70 rated chip to last 100,000 hours. The MillWright™ can support the type of power required in heavy industry with multiple input line voltages available; 120-277V, 277-480V, and 250Vdc for a crane mount. The fixture comes standard with 12kV surge protection against "dirty" power.



**The MillWright™**  
a naturalled brand

millwright@naturalled.com | 909-930-6868

Manufactured exclusively by  
**naturalled®**

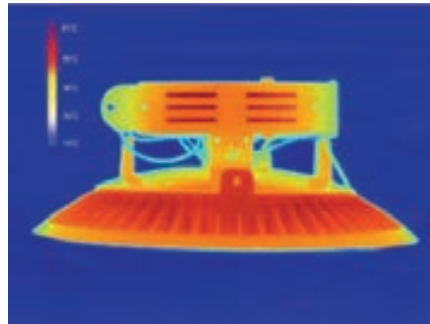
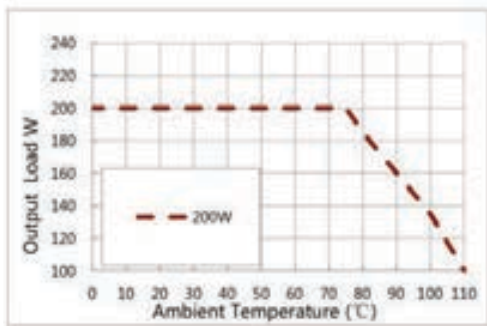
## BUILT TO SURVIVE

The MillWright™ is rated UL 1598 for wet locations, which means it meets the standards for safety to operate in a location in which water or other liquids can splash, drip or flow against the equipment.



Premium outdoor rated lens  
ADC12 die-cast aluminum  
Finish: Black, 200W or 400W

The MillWright™ operates in extreme temperatures between -40° and 70° C (158°). Unlike other LEDs that start to depreciate around 50° C (129°), The MillWright™ maintains full lumen output at 75° C. The heat sink is optimized to reduce fixture weight.



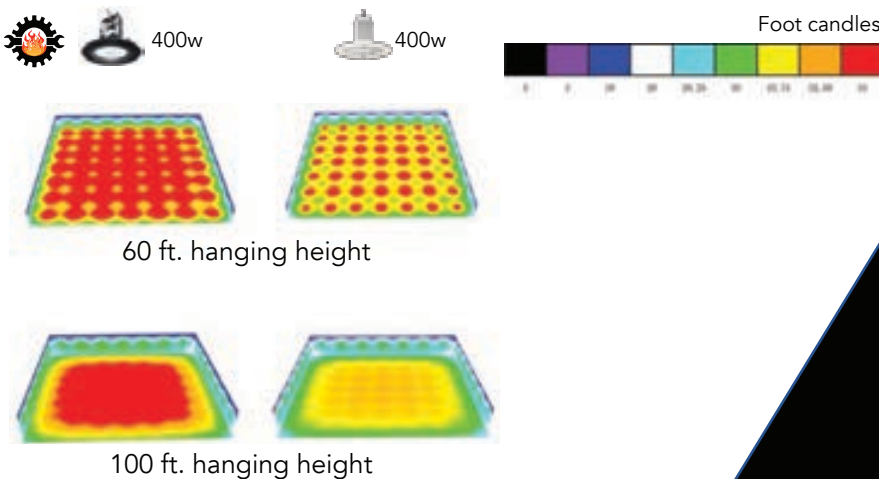
### Pictured on Left:

Because the heat sink is located in the center of the fixture it provides more surface air flow for heat dissipation. Therefore, the fixture maintains excellent thermal performance and lower junction temperature which means longer life and higher lumen output.

## BEATING THE COMPETITION

### The MillWright™ vs. the competition

The MillWright™ sets itself apart from other LEDs when it comes to light output. Hanging at 100 ft., 49 fixtures create broad, uniform light distribution that achieves over 55 foot candles on the ground - 25% brighter than the competition.



Narrow or Medium Angle  
Beam Pattern: 80° and 110°

110 ft.  
100 ft.  
90 ft.  
80 ft.  
70 ft.

# RETURN ON INVESTMENT

**Reduce Costs. Improve Employee Safety. Save Energy.**

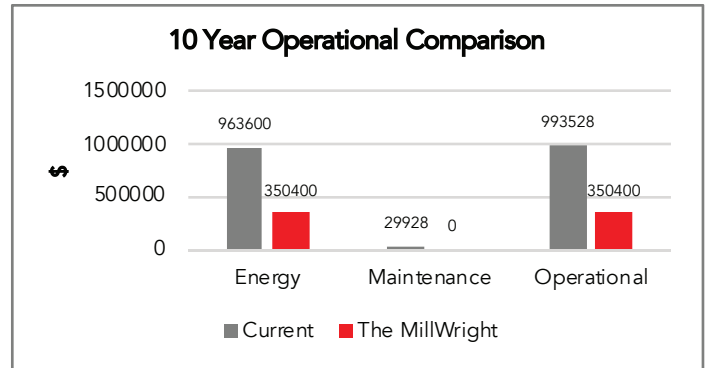
**Achieve these goals by swapping from inefficient lighting to The MillWright™.**

Manufacturing facilities pay huge energy bills so it makes sense to swap to lighting solutions that can lower costs. But it's not just the lighting itself that impacts the facility. Changing a light that hangs 100 ft. from the ceiling in a steel mill halts productivity, adds maintenance costs, and increases risk to employees.

This Operational Comparison chart shows how The MillWright™ produces a 64% savings in both energy and operational costs over the course of 10 years with a 100 fixture installation. This totals \$643,128 in savings.

- Energy cost = \$0.1000/kWh
- Annual energy cost escalation = 0.00%
- Energy costs are averaged over 10 year analysis period
- Maintenance costs are averaged over 10 year analysis period

The average lifespan of most HID's or poorly engineered LEDs in these hot and dusty environments is often shorter than expected. Luckily, The MillWright™ provides a fast return on investment by enduring harsh climates and outlasting other lighting technology with its superior design.



## EMPLOYEE SAFETY

Brighter lighting is essential to improving working conditions in locations where loud machinery, vibrations, high ceilings, dust and debris can compromise employee safety.

- Improve visual acuity
- Reduce risk of employee injury
- Lower maintenance costs
- Lifespan 100,000 hours



The MillWright™ is covered by a 10 year limited warranty.



millwright@naturalled.com | 909-930-6868

Manufactured exclusively by  
**naturalled**



# OUTDOOR APPLICATIONS

Although a large portion of the heavy industry environment is centered around multiple types of furnaces, continuous casters and molten hot metal, there are locations away from the heat and dirt that require bright, efficient lighting. NaturaLED® offers LED lighting solutions tailored to fit any situation, both indoor and outdoor; office lighting, hallways, stairwells, lockers, break-rooms, parking lots, area lighting, flood lights, etc.



Outdoor lighting should be defined by brightness and safety. Regardless if you work 9 to 5 or overnight shifts, walking into a dark parking lot shouldn't have to be an option. Clear, white light improves the natural environment making it safe and secure for employees and visitors after dark.



## PARKING AREAS

### FEATURED PRODUCTS

#### SLIM AREA LIGHTS



#### CANOPY LIGHTS

#### FLOOD LIGHTS



#### WALL PACKS



#### SLIM WALL PACKS



### Additional Outdoor Applications

- Parking garages
- Building exteriors
- Street lighting
- Security lighting
- Perimeter lighting
- Pathway lighting
- Architectural lighting





Time-controlled dusk to dawn lights help conserve energy and illuminate exterior spaces after dark. If you want a security feature that spotlights specific areas or an automatic way to control path lights, these fixtures can provide both. Timers, photocells and motion sensors provide complete control over exterior lighting fixtures.

## WALL LIGHTS

### FEATURED PRODUCTS

#### VAPOR TIGHT JELLY JARS



#### SECURITY WALL LIGHTS



#### Additional Benefits

- Optional motion and daylight sensors
- Provides increased security after dark
- 200w to 20w security wall light replacement saves up to 90% energy

#### BARN LIGHTS







# INDOOR APPLICATIONS

## WAREHOUSES/ MANUFACTURING

Warehouses and manufacturing facilities have different lighting needs than standard retail locations. Because of hazardous working conditions, they require lighting that improves employee safety and provides long-lasting efficiency to keep production lines moving.

According to the Occupational Safety and Health Administration (OSHA), lighting standards in warehouses, construction and manufacturing are strictly regulated to ensure that lighting is bright enough to work safely.

At NaturaLED®, we **always** meet and exceed those standards.

### OSHA Illumination Standard 1926.56

#### Sensors & Emergency Backup

- Motion/occupancy sensor available
- Remote control option
- Emergency backup power included as standard safety feature

Minimum Illumination Intensities in foot-candles	Foot Candles
Loading docks, fueling areas, loading platforms	3 fc
Warehouses, general construction areas, hallways	5 fc
General construction shops, mechanical & electrical equipment rooms, restrooms, workrooms	10 fc
First aid stations, offices, infirmaries	30 fc

### FEATURED PRODUCTS

ROUND HIGH BAYS    LINEAR HIGH/LOW BAYS





Office lighting has never played a more critical role in the productivity of employees. NaturaLED® has designed our office solutions to provide crisp, ambient light that is energy efficient and low maintenance. Transform your office spaces into a setting you can be proud of!

## OFFICES

### FEATURED PRODUCTS



MOTION  
SENSOR



CONTROLS

#### TROFFERS

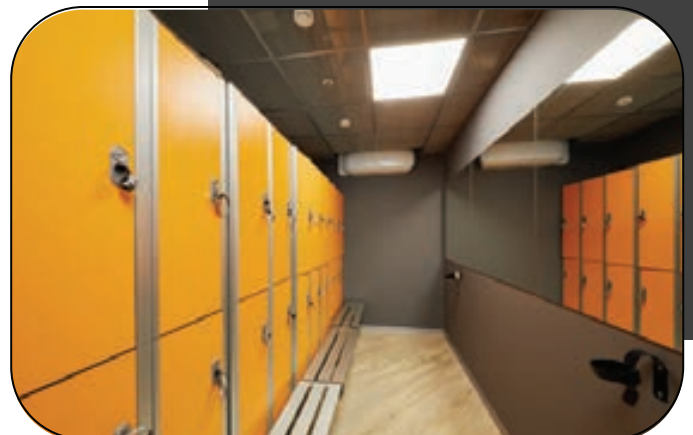


#### FLAT PANELS



### Additional Indoor Applications

- Conference rooms
- Meeting rooms
- Hallways
- Training rooms
- Locker rooms
- Restrooms
- Storage closets
- First aid/infirmarys







**INTERIORS**

Interior spaces include conference rooms, hallways, training areas and more. NaturaLED® offers numerous solutions for fluorescent replacements; instant fit LEDs for fluorescent tubes, vapor tights for damp locations like parking garages, and utility strip lights are ideal around stairwells, corridors and retail settings.

**Fluorescent Replacements**

**FEATURED PRODUCTS**

**INSTANT FITS**



**UTILITY STRIP LIGHTS**



**VAPOR TIGHTS**



natural<sup>led</sup>

Turning Lights into Savings

### California, USA

2000 S. Grove Ave, Bldg B, Ontario, CA 91761  
855-758-7009 | 909-930-6868

### Texas, USA

11011 Regency Crest Dr. Ste 800, Dallas, TX 75238

### North Carolina, USA

2511 Reliance Ave, Apex, NC 27539

### Canada

5514-275th Street, Langley, BC V4W 3X7